

Materials

Beech plywood 13mm
2 hinges with their wood screws

Tools

- Jigsaw
- Drill
- Set square
- Wood glue or not
- Paper sand

Steps

Draw different pieces on wood
Cutting according tracing
Place the hinges for the reflectors
Put the pieces together
Place your bulb and lamp socket

Your lamp "Multi" is done!

Left

Face

Section AA'

Back

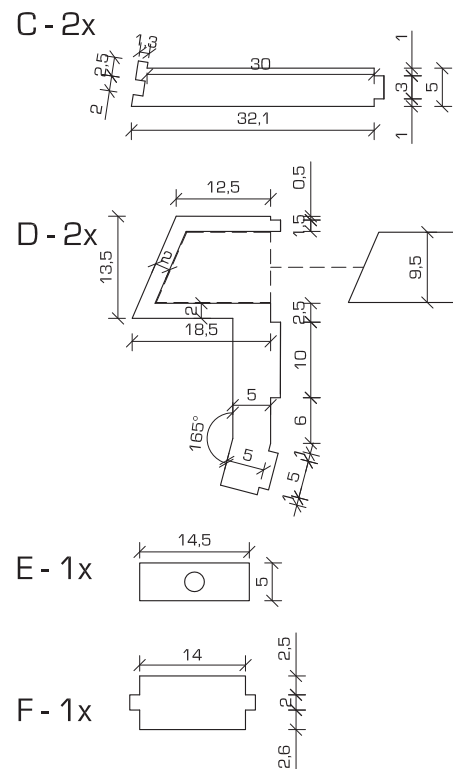
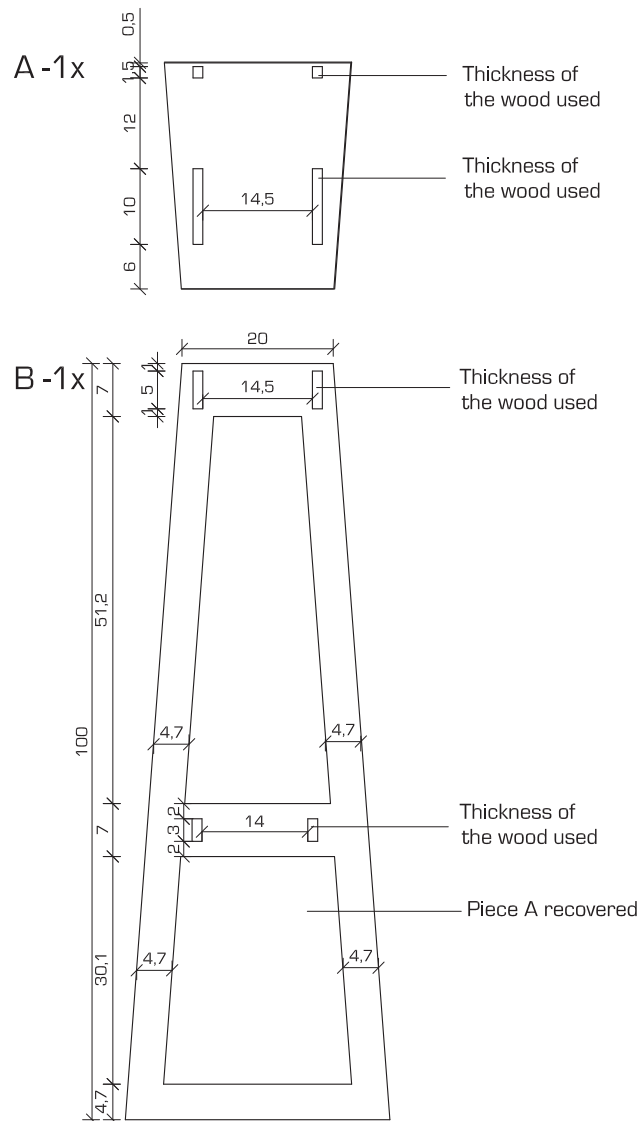
Lamp " Multi"

Free art license
libreobjet.org

Design :Jeromine Massart

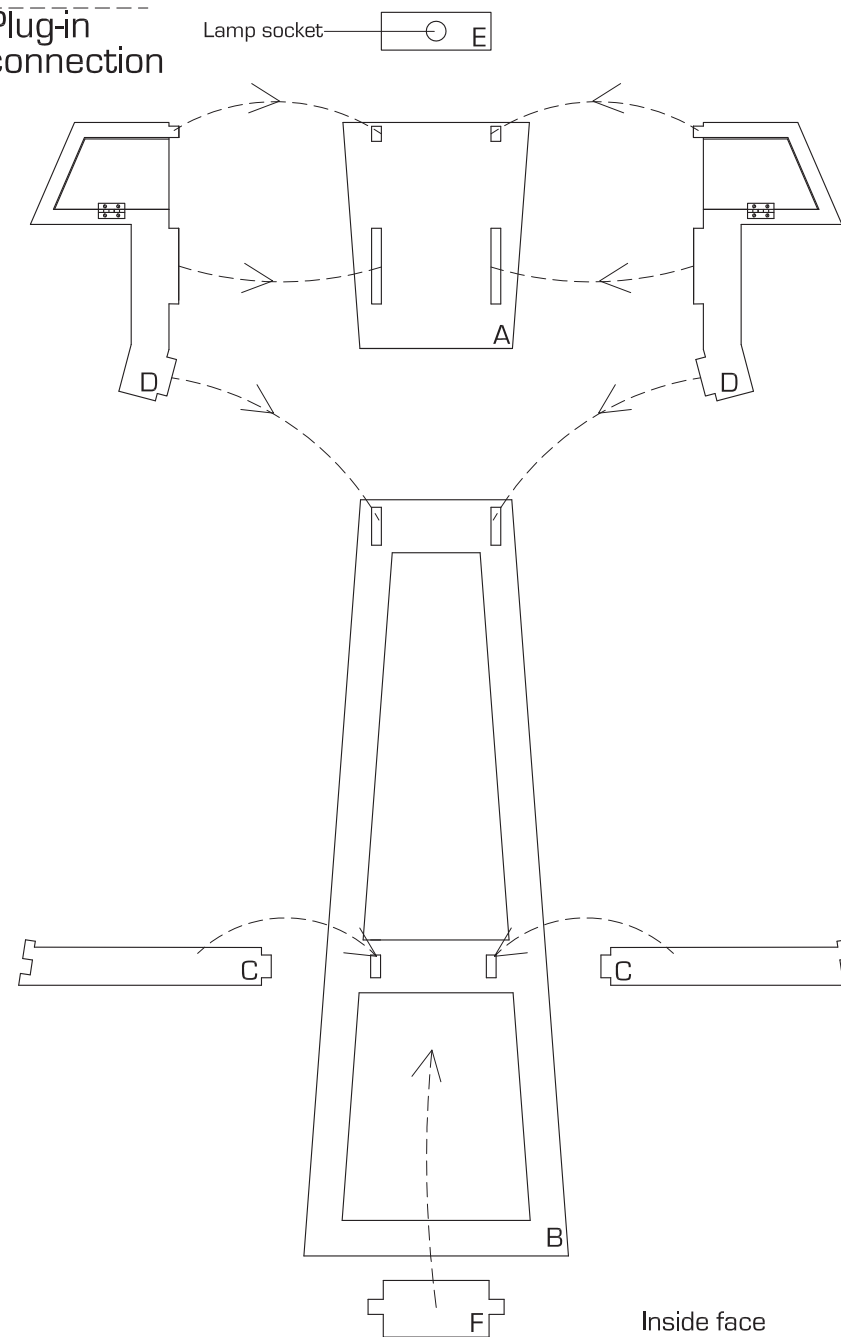
22 June 2014

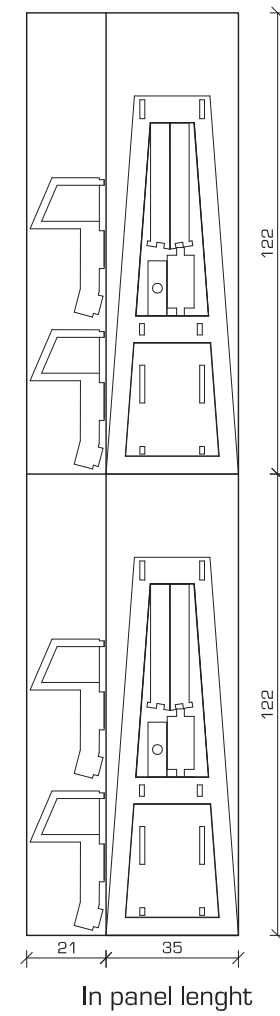
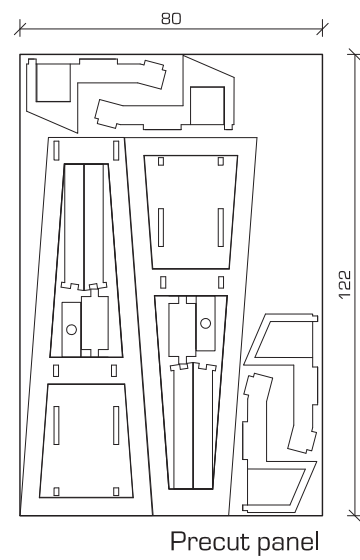
Plan 1/3



Pieces

Plug-in connection





Lamp «Multi»

Jeromine Massart
libreobjet.org

