

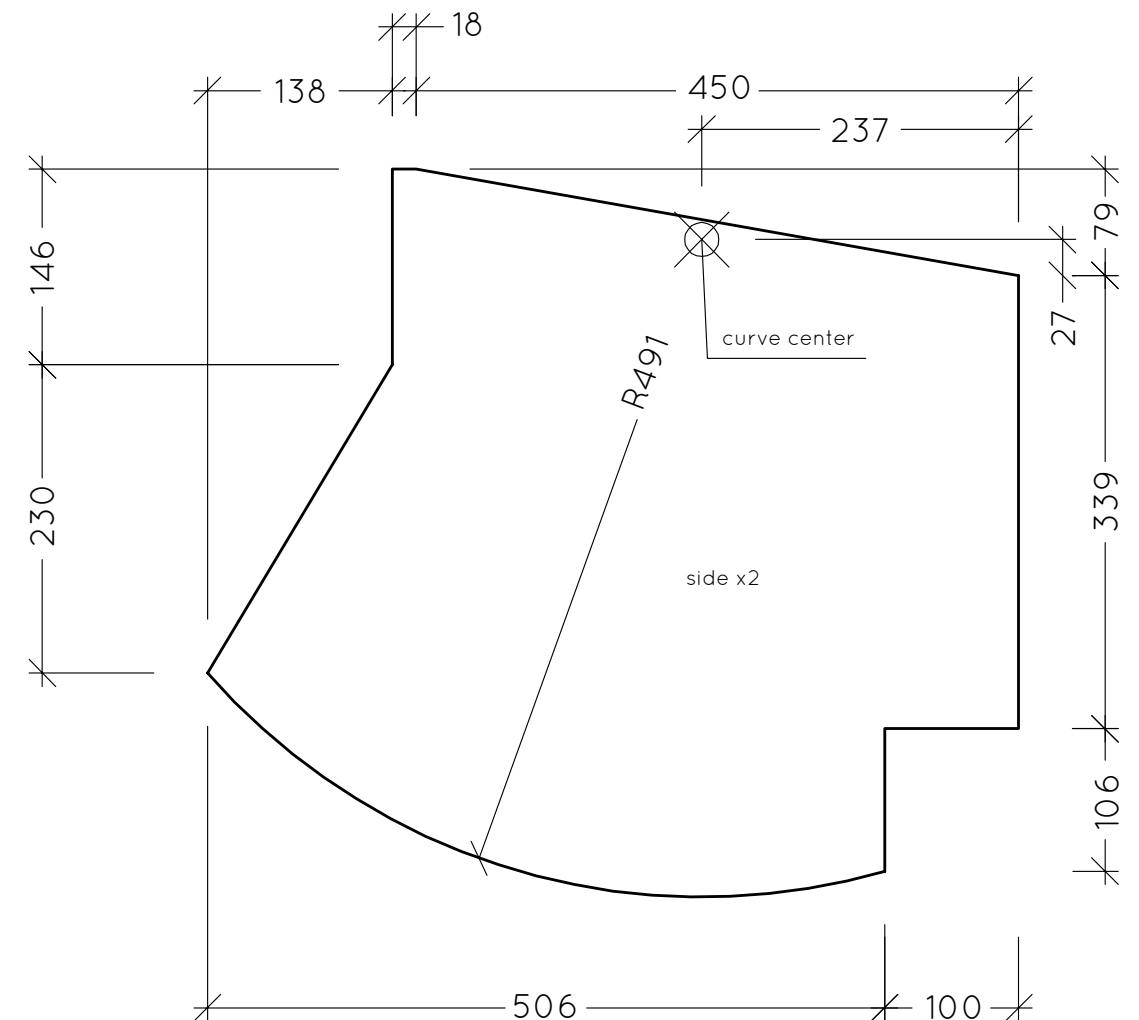
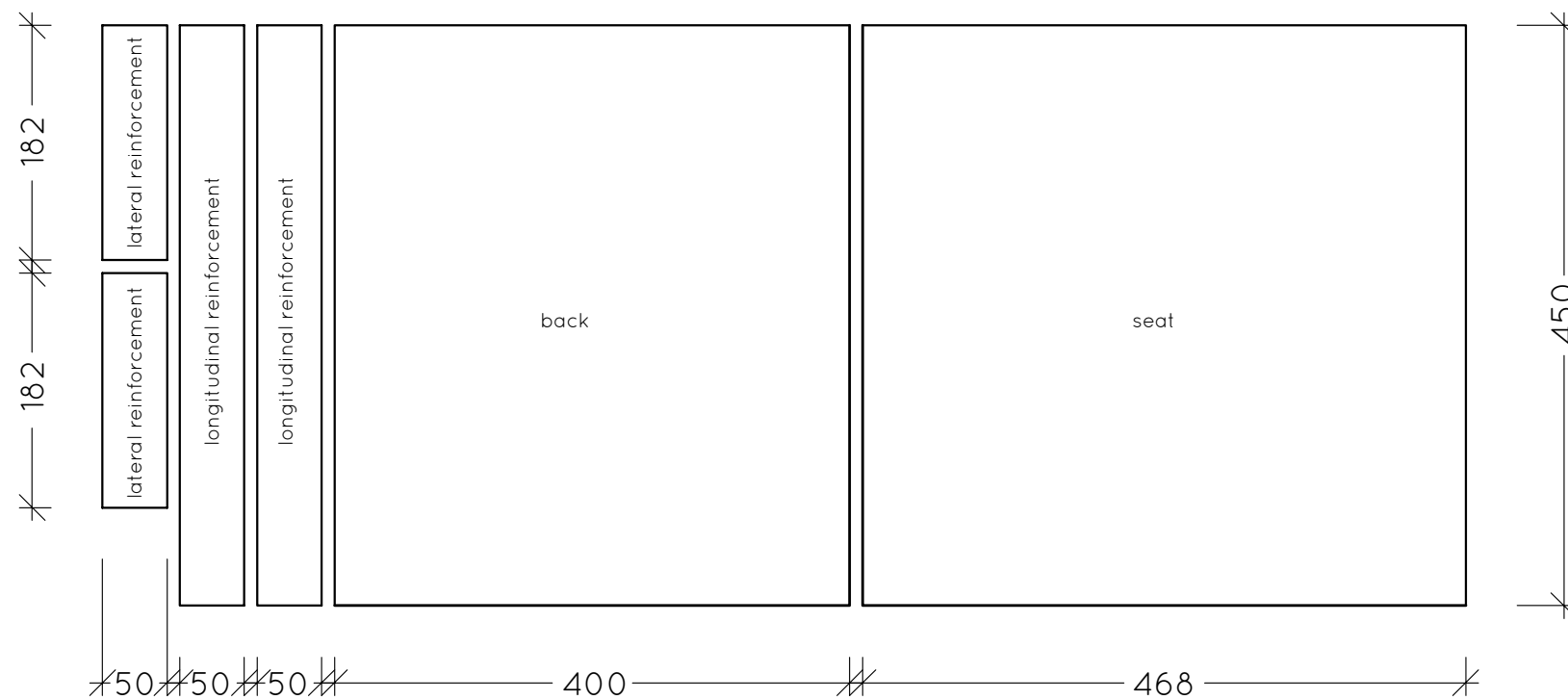
REEBOeK

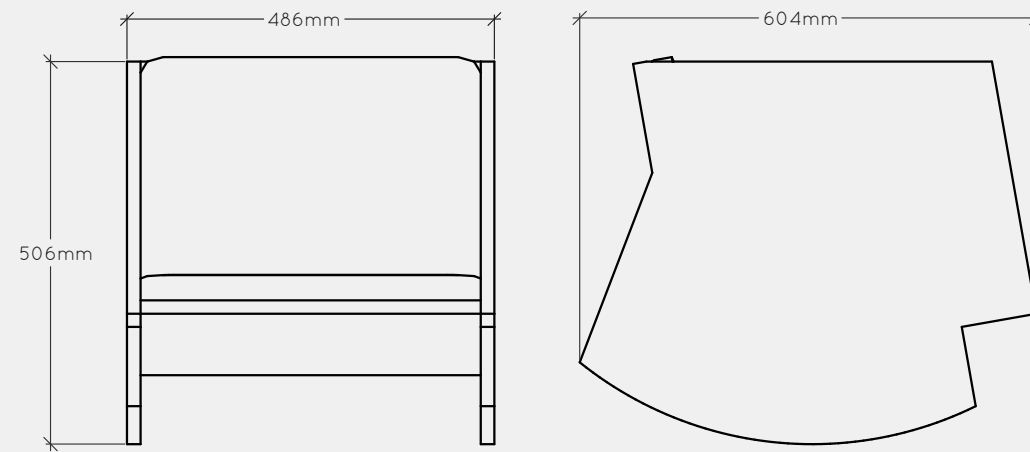
Materials

- plywood panel 13 mm or OSB panel 11/12mm
- wood screws $\approx \varnothing 4.5 \times 60 \text{mm}$
- glue

Tools

- hand saw, circular saw, jigsaw
- drill, drill bit 3mm, screwdriver...
- sander, paper sand...

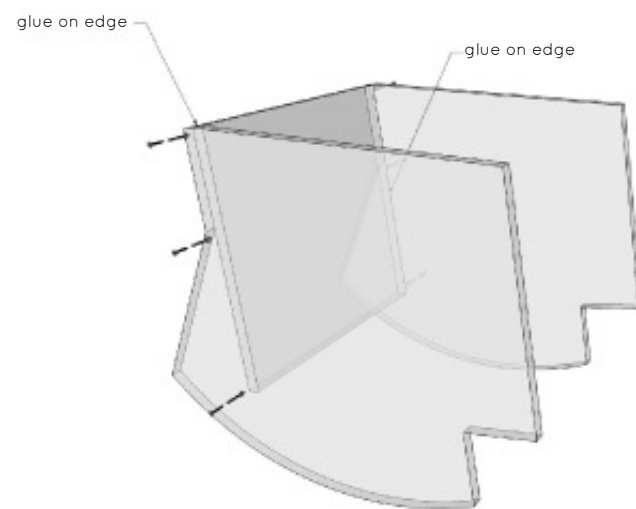




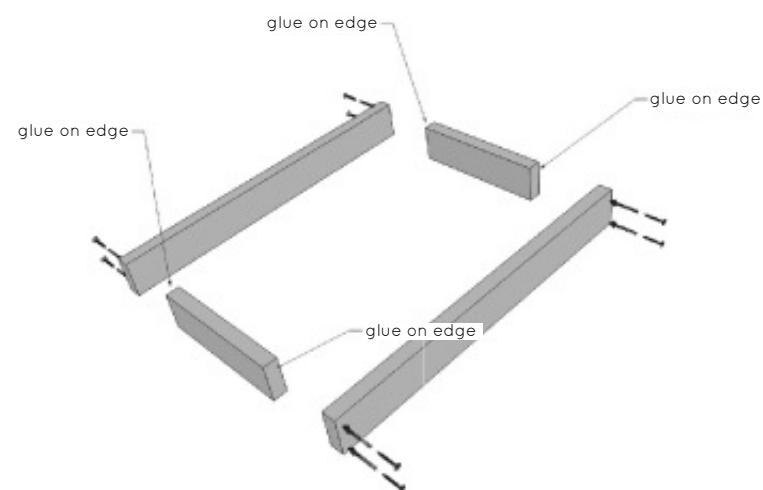
REEBOeK

Building steps

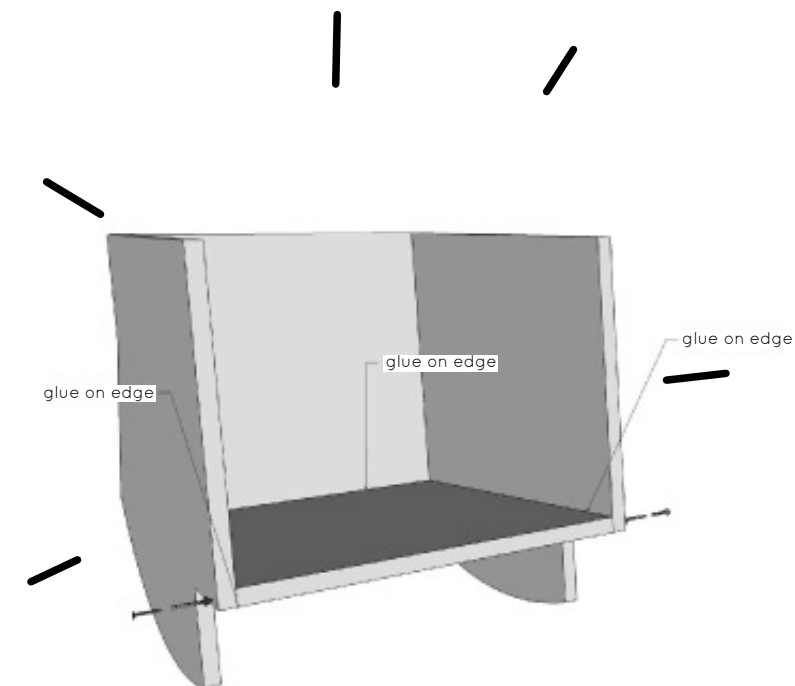
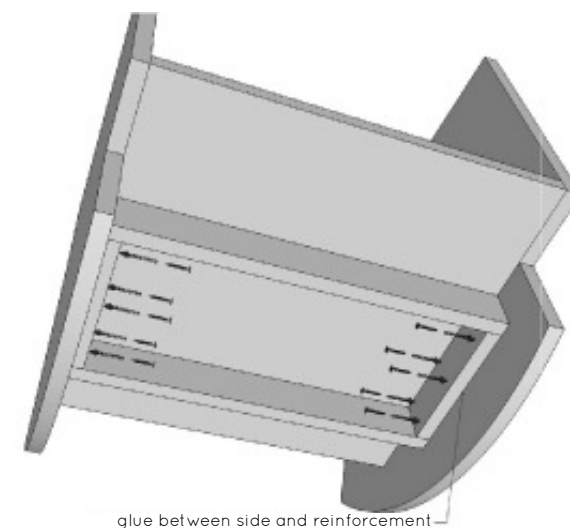
- 1 - join back part and sides
- 2 - build a frame with reinforcements
- 3 - fix the frame under the seat with small screws, put the seat part on the frame top
- 4 - add lastest screws and enjoy !



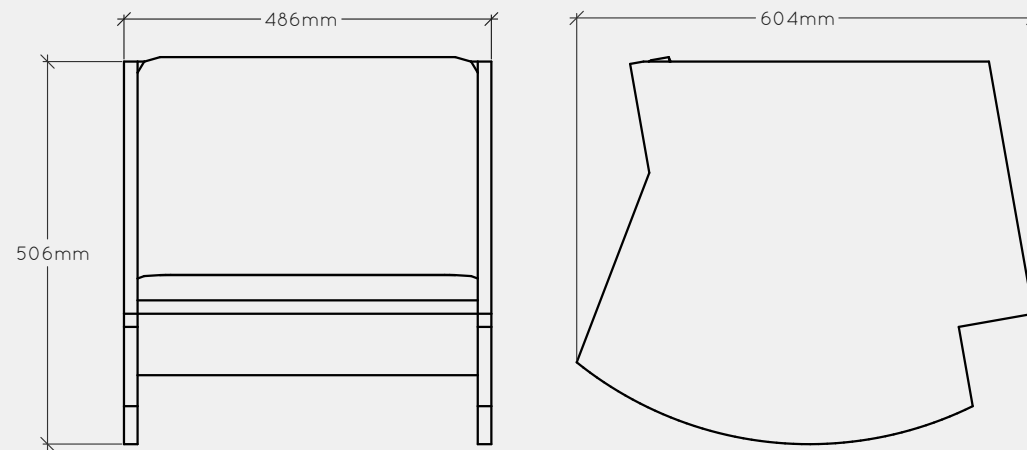
①



②



④



REEBOeK

Cutting advice

After cut, soft all edges and sand down faces

cutting layout
standard board 2440x1220 mm

