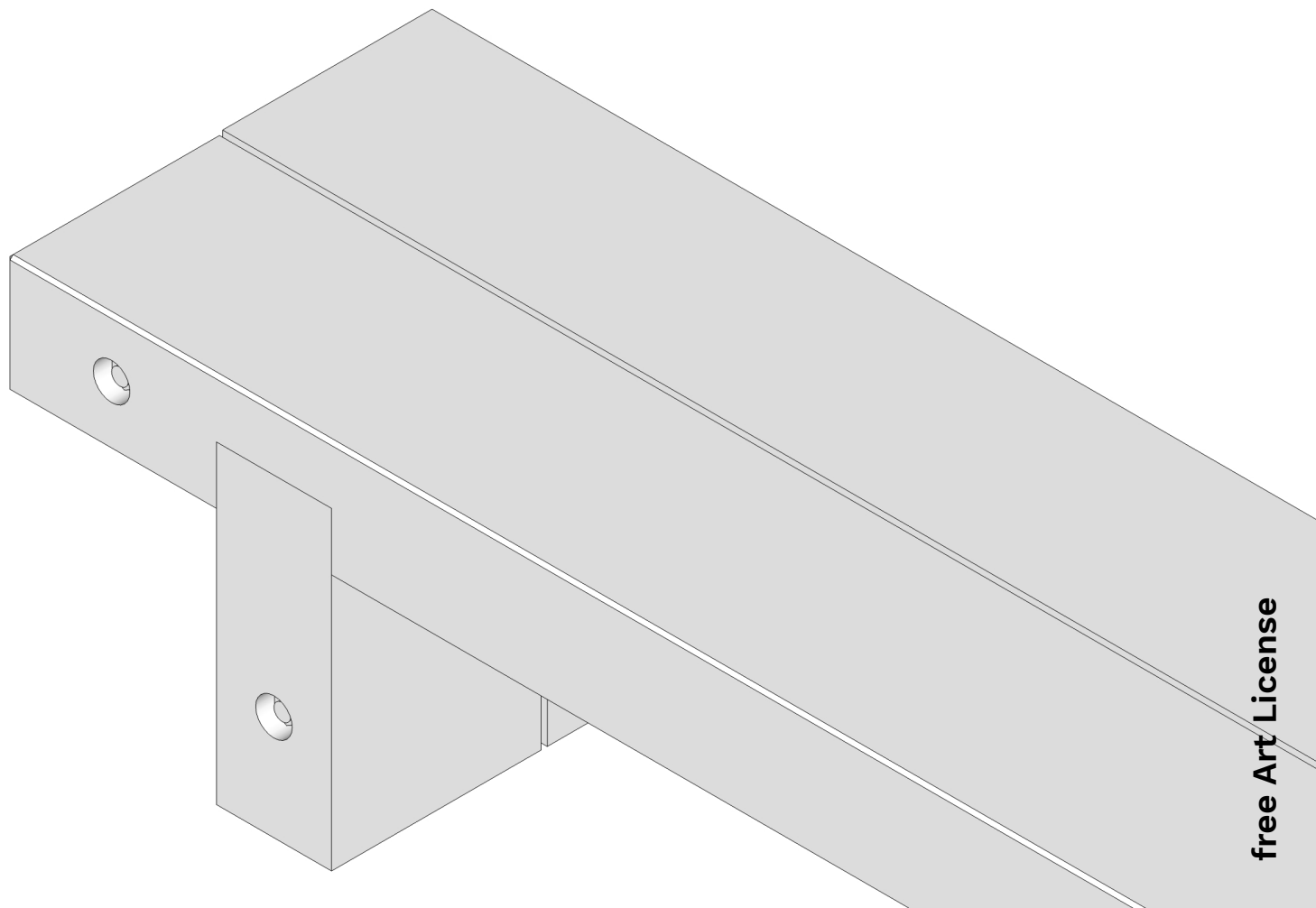


# **SNCBENCH**

**libreobjet project**

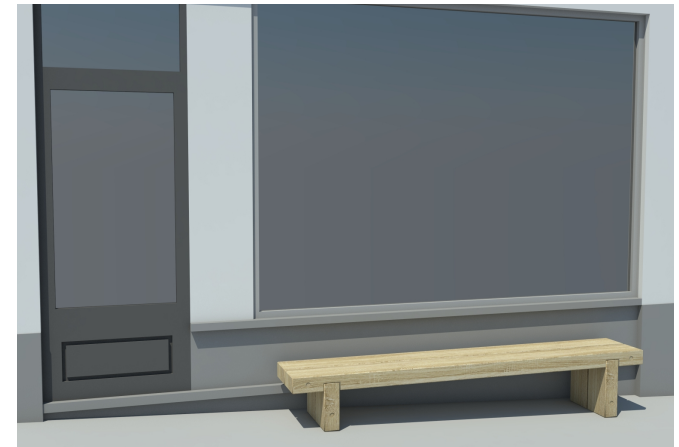


**free Art License**

# SNCBENCH

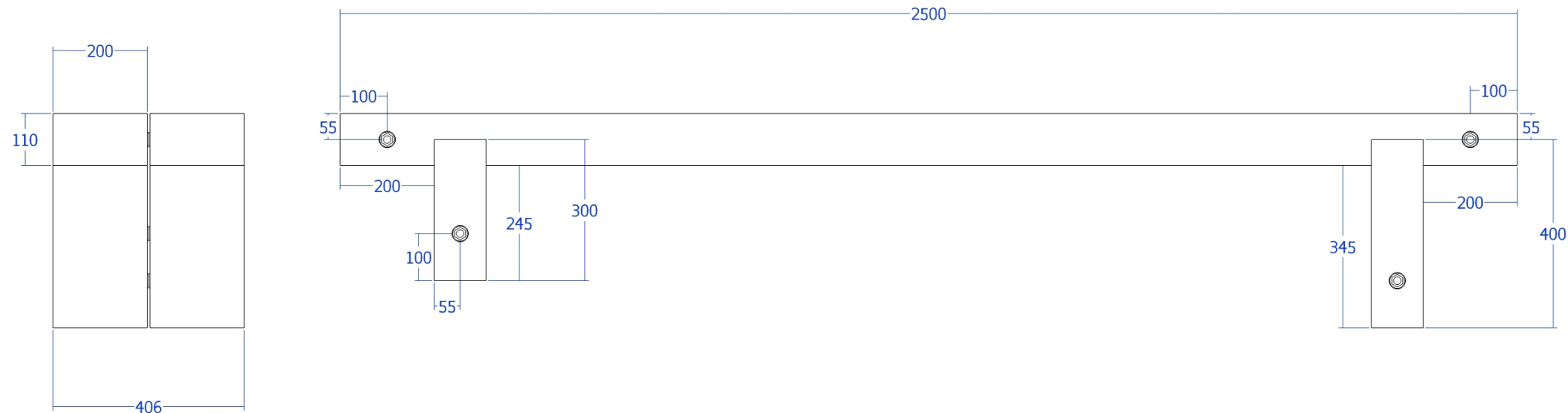
libreobjet project

A bench made from new wooden railway sleepers.  
Please be careful, old ones could be very toxic because  
of the treatment !



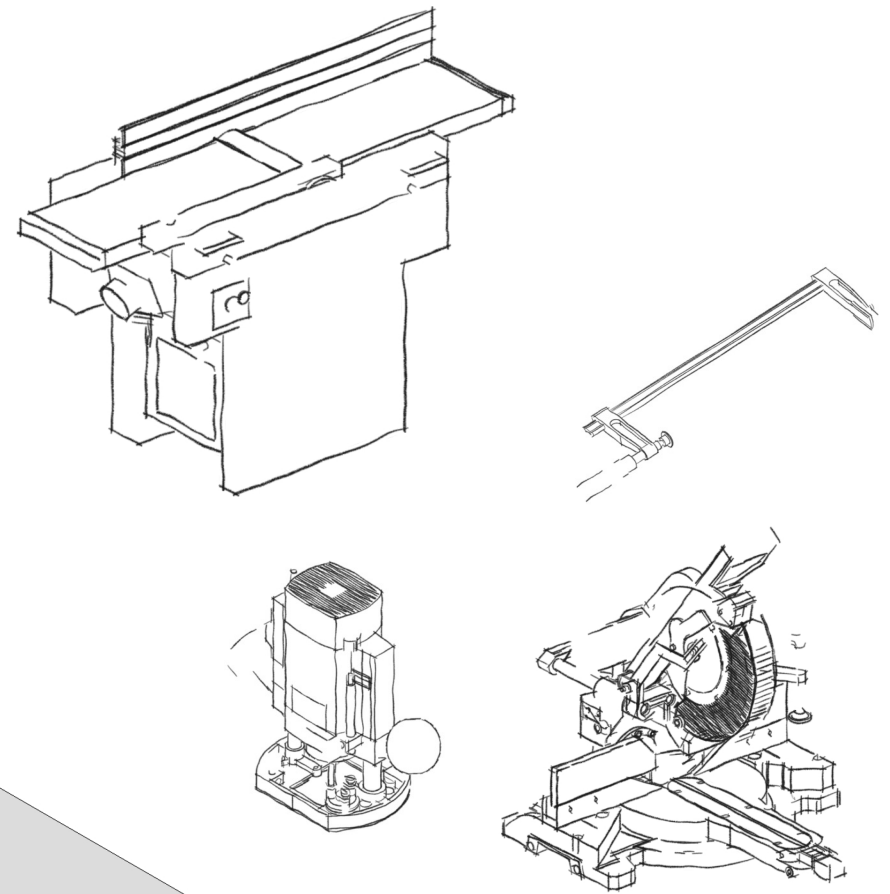
# SNCBENCH

libreobjet project



# SNCBENCH

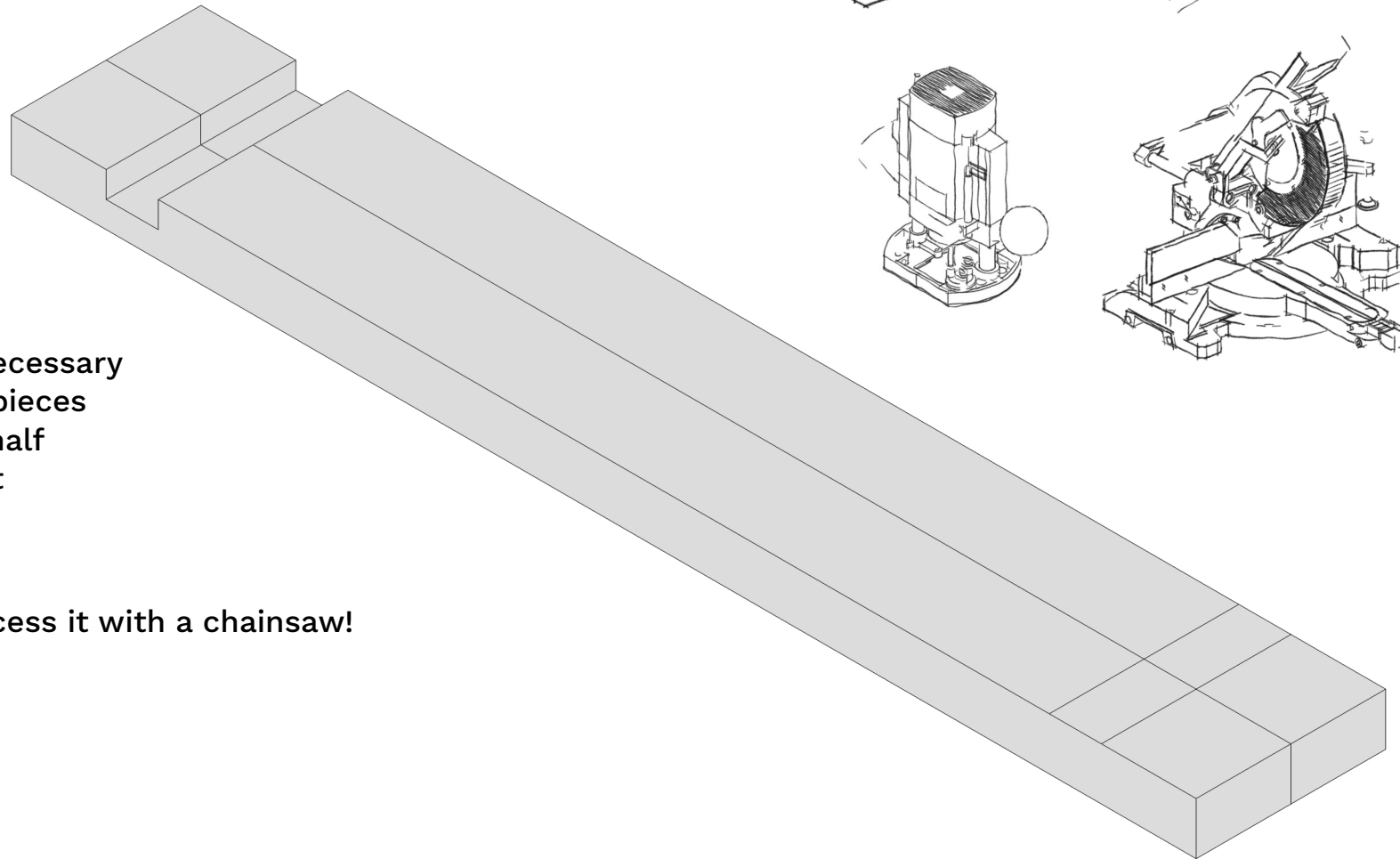
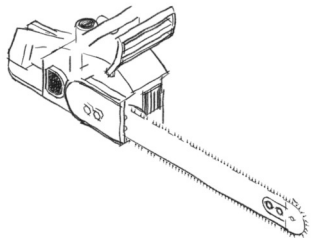
libreobjet project



- 1 - planing surfaces if necessary
- 2 - clamp together both pieces
- 3 - mill thickness in the half
- 4 - cut at the right lenght

Or

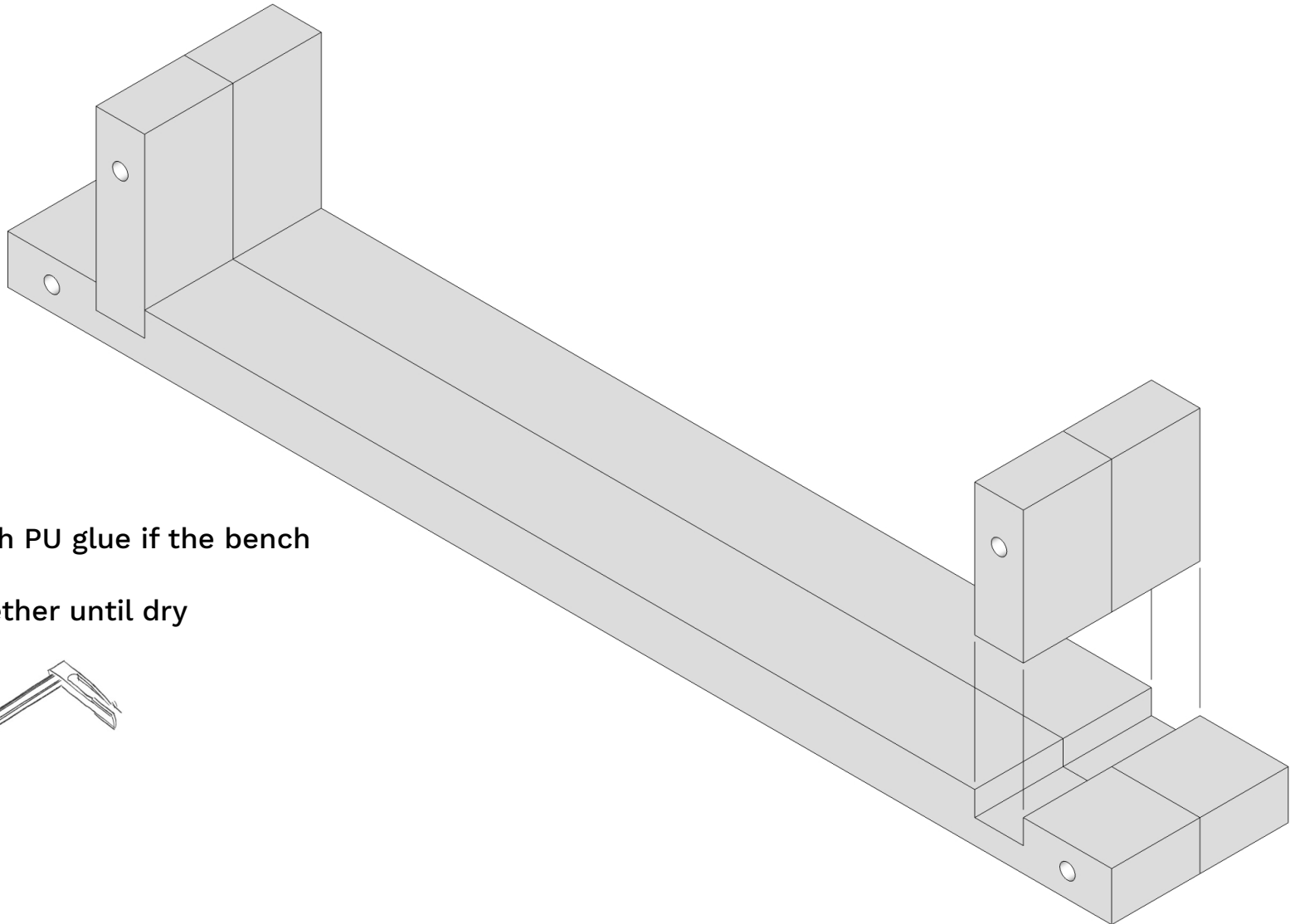
- 1 - keep it rough and process it with a chainsaw!



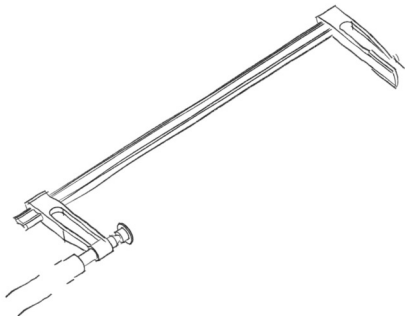


# **SNCBENCH**

**libreobjet project**



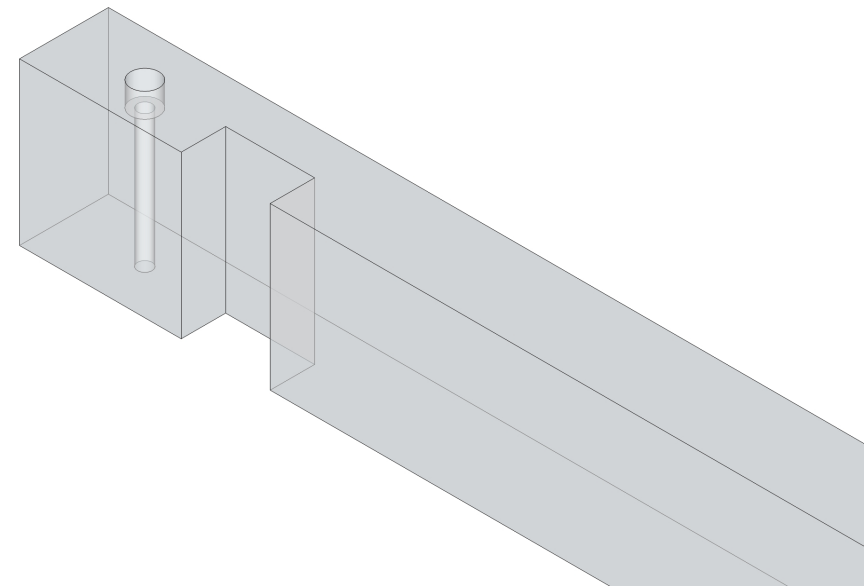
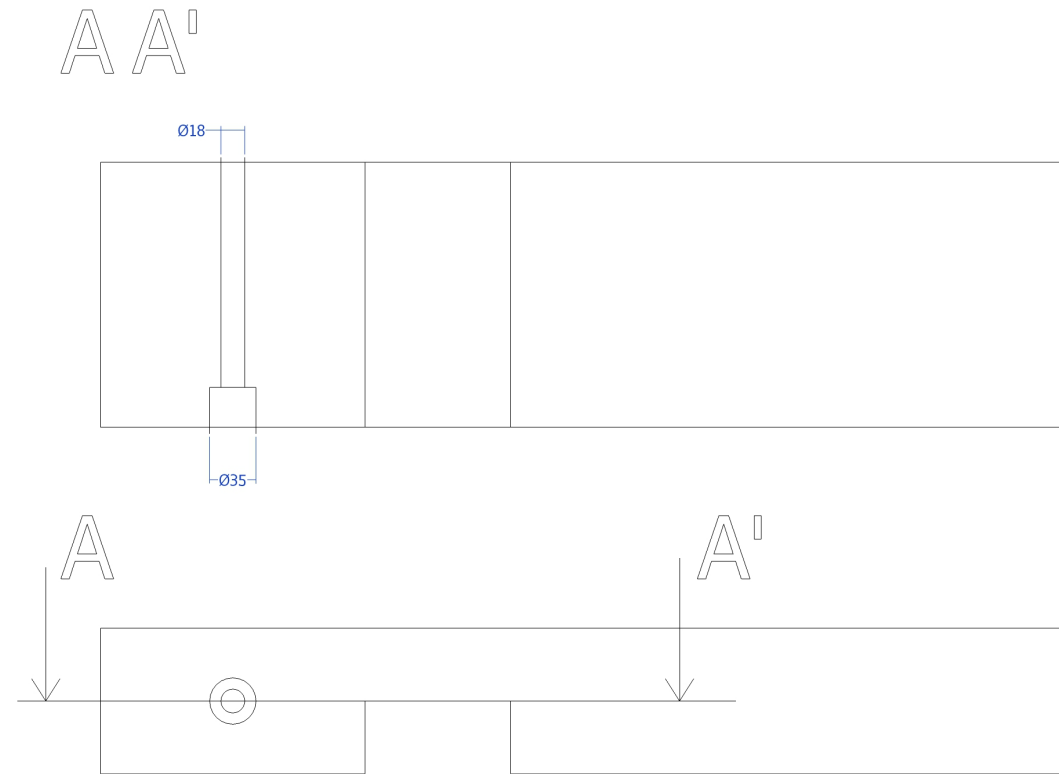
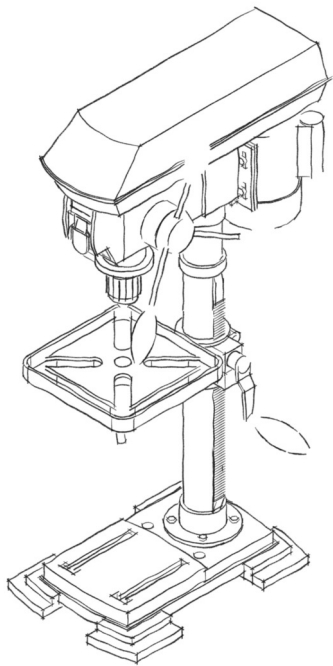
- 1 - join parts with PU glue if the bench goes outside
- 2 - clamp it together until dry



# SNCBENCH

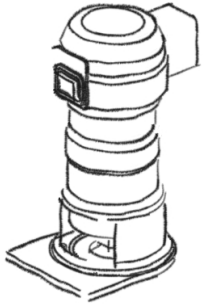
libreobjet project

- 1 - start drill the larger hole - 20 mm deep
- 2 - drill the second hole through all the thickness

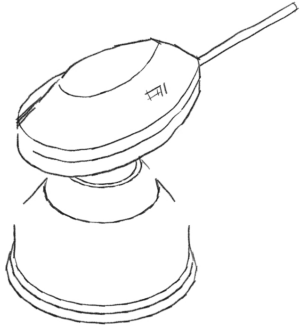


# **SNCBENCH**

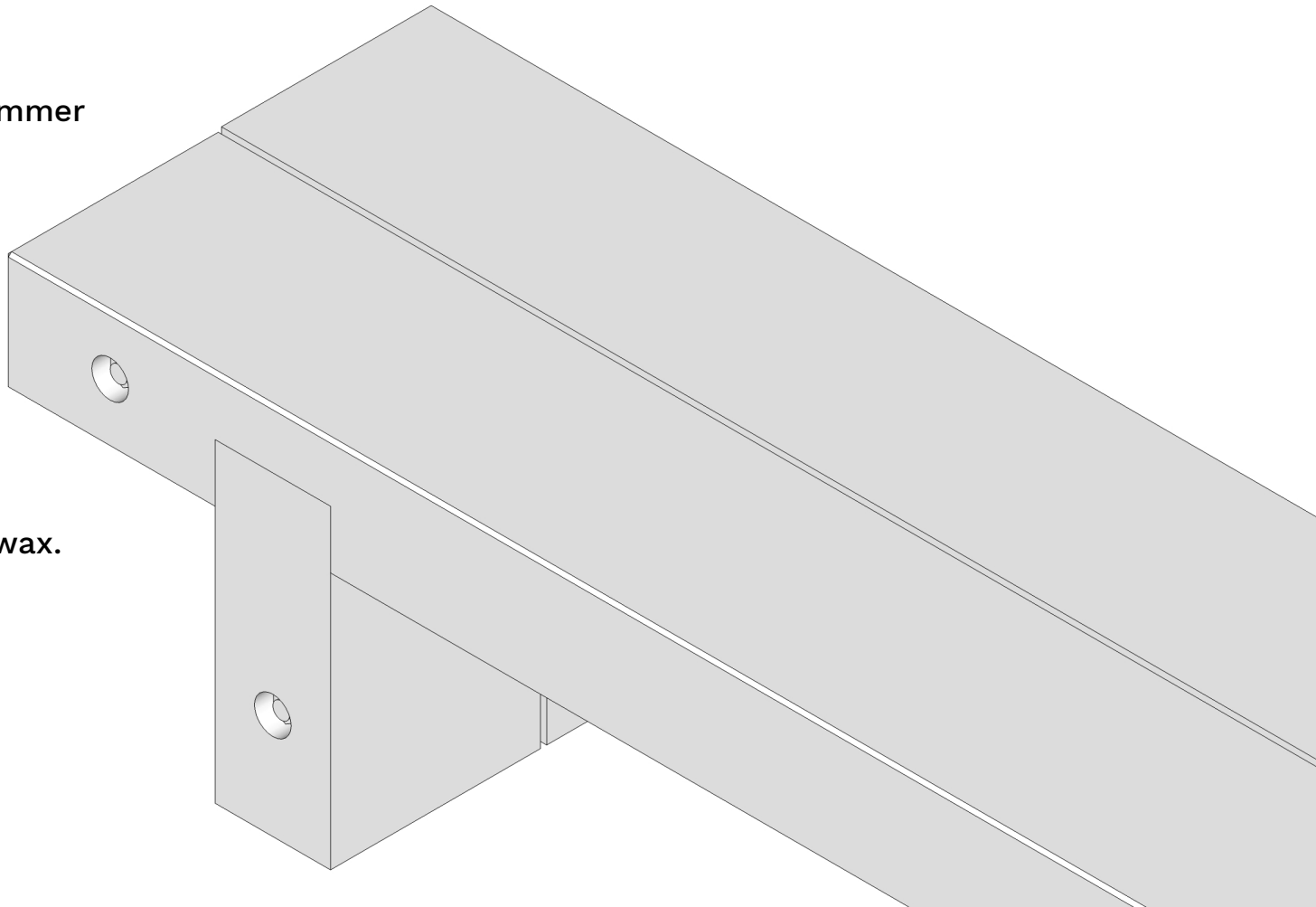
**libreobjet project**



- 1 - trim edges with sand paper or a trimmer
- 2 - to get clean finish, sand surfaces

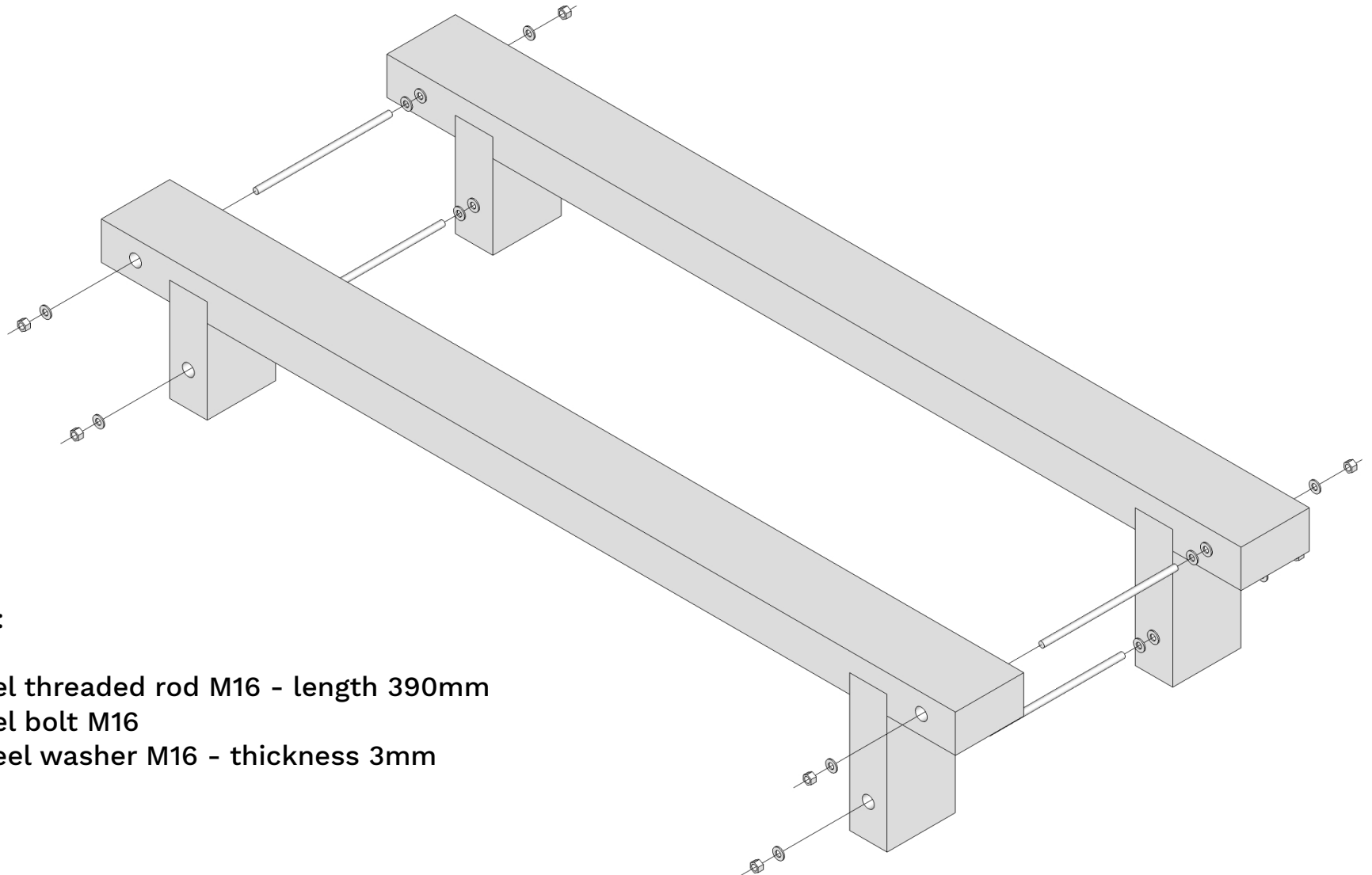


- 3 - protect wood if you want with oil/wax.  
Do it each year.



# **SNCBENCH**

**libreobjet project**



1 - Assembly with:

- 4 stainless steel threaded rod M16 - length 390mm
- 8 stainless steel bolt M16
- 24 stainless steel washer M16 - thickness 3mm

2 - Enjoy!



# SNCBENCH

libreobjet project





# SNCBENCH

libreobjet project

